

www.squiresestates.co.uk
SALES • LETTINGS • MANAGEMENT



Montpelier Road, London, N3 2ER

£2,300 Per Week -

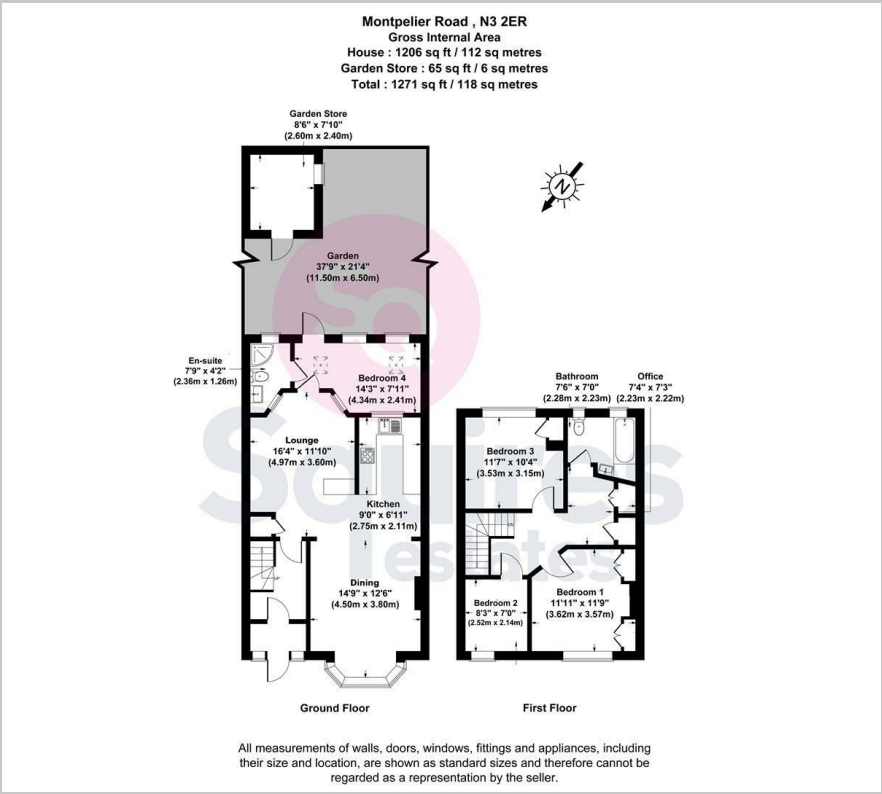
A good size 3 bedroom house located on this quiet street in Finchley Central. The house offers an open accommodation on the ground floor with a reception area, dining area and recessed kitchen. Additionally there is an extra reception area with downstairs shower room. The 1st floor comprises 2 double and 1 large single, along with a family bathroom. Rear garden. Furnished and available from 28th February

Council tax band E
Deposit £2653.84

- 3 Bedrooms
- Large downstairs
- 2 Bathrooms
- Rear garden
- Council tax band E
- Terraced house
- Furnished
- Available 28th February



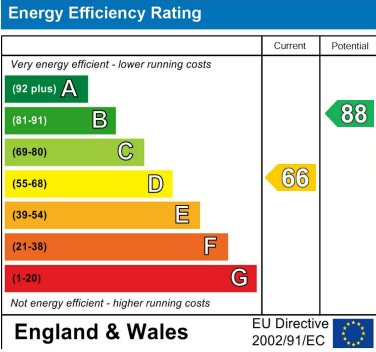
Floor Plan



Area Map



Energy Efficiency Graph



These particulars, whilst believed to be accurate are set out as a general outline only for guidance and do not constitute any part of an offer or contract. Intending purchasers should not rely on them as statements of representation of fact, but must satisfy themselves by inspection or otherwise as to their accuracy. No person in this firms employment has the authority to make or give any representation or warranty in respect of the property.